

The logo for TMI GROUP is mounted on the side of a large industrial building. 'TMI' is in red, bold, sans-serif capital letters, and 'GROUP' is in grey, 3D-style sans-serif capital letters.

TMI GROUP

Technical Datasheet

UNIDACHS 2



Operating weight: approx. 5.100 up to 5.300 kg
Diesel drive with 55 kW, alternatively electric drive with 37 kW
Telescopic stroke: 2.000 mm

» Technical specifications

220

Crawler undercarriage

Crawler chain	B00
Base plates	200 mm
Gradability	50 %
Ground pressure	7,5 t/m ² (200 mm base plates) max. 3.9 t each outrigger
Outriggers	4 pcs. (proportional) With outrigger relief
Drive system	Stepless hydrostatic traction drive, independent drive for each track side
Brakes	Spring set, hydraulically released wet multi disc brake
Parking brake	Wet multi-disc brake, wear free, automatic activation when joystick is in neutral position
Travel speed	0 – 2.9 km/h

Diesel drive

Diesel engine (EU/USA)	DEUTZ AG, Stage EU V, TCD 2.9, 4 cylinders, Diesel engine with diesel oxidation catalyst and particulate filter, US EPA Tier 4
Diesel engine (non EU/USA)	DEUTZ AG, Stage EU IIIB, TCD 2.9, 4 cylinders Diesel engine with diesel oxidation catalyst
CO2-neutral operation	Possible with paraffinic diesel fuel according to EN 15940
Rated power	55/54 kW
Engine capacity	2925 cm ³
Torque	300 Nm at 1600 min ⁻¹
Cooling	Fluid
Air filter	2 stage, with electrical contamination indicator
Fuel tank capacity	65 liter

Electro drive 3-phase (alternative)

Rated power	37 kW at 400 V / 50 Hz 37 kW at 460 V / 60 Hz
Voltage	400 V or 460 V
Frequency	50 Hz or 60 Hz

Hydraulic system

Axial piston variable displacement pump with demand-oriented flow rate and load-controlled pressure control. Fully variable temperature-dependent control of cooling capacity. Cooling system with periodic reverse direction of rotation for cleaning.

System	Load-Sensing
Operating pressure	240 bar
Hydraulic oil tank capacity	110 liter
Max. pump pressure	250 bar
Max. delivery volume	150 l/min (55 kW) 130 l/min (37 kW)
Pump type	Axial piston variable displacement pump
Filtering	Hydraulic tank return filter

Upper structure

Hydrostatic slew drive with axial piston motor & planetary gear.	
Rotation	360°, continuous, endless
Rotation speed	0 – 2.8 min ⁻¹
Slewing brake	Spring set, hydraulically released wet multi disc brake

» Technical specifications

220

Three-stage articulated boom (K version)

Three-stage articulated boom. Fully enclosed design to protect the hoses and the tool cylinder against radiation heat and falling objects.

Max. range	6800 mm
------------	---------

Cradle & telescopic boom

Telescopic boom with integrated rotating unit. Fully enclosed design to protect the hoses and the tool cylinder against radiation heat and falling objects.

Max. range	6200 mm
------------	---------

Telescopic stroke	2000 mm
-------------------	---------

Rotation	360°, continuous, endless
----------	---------------------------

Boom rotation speed	0 – 5 min ⁻¹
---------------------	-------------------------

Boom rotation torque	3700 Nm
----------------------	---------

Traction	17 kN
----------	-------

Radio remote control (inclusive)

Operation via 2 joysticks. Illuminated colour display. Waist belt carrying system.

Weight	4.5 kg
--------	--------

Electrical system

System voltage	24 V
----------------	------

Battery	2 pcs.
---------	--------

Lighting

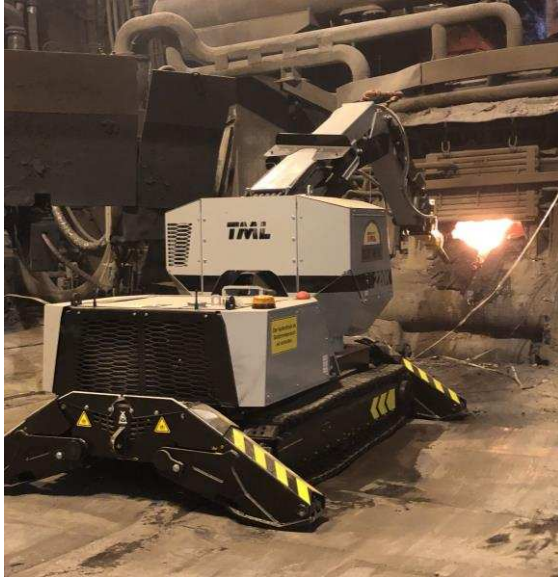
Upper structure	2 x LED headlights + 2 LED headlights (optional)
-----------------	---

Surrounding warning light	1 x LED, yellow
---------------------------	-----------------

Paint

Main colour	yellow, RAL 1007
-------------	------------------

Contrasting colour	black, RAL 9005, RAL 9005
--------------------	---------------------------



UNIDACHS 220K



UNIDACHS 220

UNIDACHS - The best answer to extreme conditions

Crawler undercarriage	2 Series Heavy Metal	2 Series Hard Rock
Chain sealed lifetime lubricated	●	●
Base plates 200 mm	●	●
Rubber pads for base plates	○	○
2nd driving stage for two driving speeds	○	○

Upper structure	2 Series Heavy Metal	2 Series Hard Rock
Rotation 360° , continuous, endless	●	●
Central lubrication system for upper structure and cradle	○	○
Arctic pack (hydraulic oil, engine and fuel preheating, Battery trickle charge (starter battery, 230V / 115V)	○	○
Storage compartment	●	●
Charger for remote control battery	●	●
Main isolator switch for electrical system	●	●
Service doors lockable	●	●

Drive unit options	2 Series Heavy Metal	2 Series Hard Rock
DEUTZ AG, modell: TCD 2.9, 4 cylinders, Diesel engine with diesel oxidation catalyst and particulate filter, Stage EU V, US EPA Tier 4, 55 kW	○	○
DEUTZ AG, Modell: TCD 2.9, 4 cylinders, Diesel engine with diesel oxidation catalyst, Stage EU IIIB, US EPA Tier 4i, 54 kW	○	○
Elektro drive 3-Phase, Voltage (400V oder 460V) rated power 37 kW	○	○

Boom	2 Series Heavy Metal	2 Series Hard Rock
Telescopic stroke 2000 mm	●	●
Rotation 360°, continuous, endless	●	●
Three-stage articulated boom (K version)	○	○
Flange extension (telescopic boom only)	○	○
Dirt deflector between main boom and inner boom	○	●
Additional hose tray for hydraulic or pneumatic tools	○	○
Bumper plates on the main Boom	○	●
Central lubrication system cradle	○	○
Overload warning system	○	○

Key: ● Standard ○ Option



UNIDACHS 220



Radio remote Control

UNIDACHS Series 2

Radio remote control	2 Series Heavy Metal	2 Series Hard Rock
Remote control via radio transmission	●	●
Remote control via cable	●	●
2 Joysticks	●	●
Illuminated colour display	●	●
Operating mode selector switch	●	●
Single hand drive mode	●	●
Tool control	●	●
Radio frequency 16 channels 433/434 MHz	●	●
Radio frequency 16 channels 535 MHz	○	○
Radio frequency 16 channels 461 MHz	○	○
Emergency stop button on transmitter unit	●	●
Waist belt carrying system	●	●

Accessoires	2 Series Heavy Metal	2 Series Hard Rock
Emergency first aid kit	●	●
Storage compartments	●	●
Tool kit	●	●

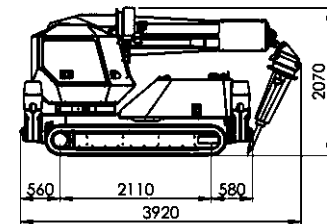
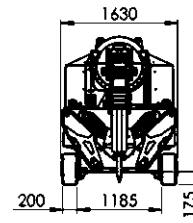
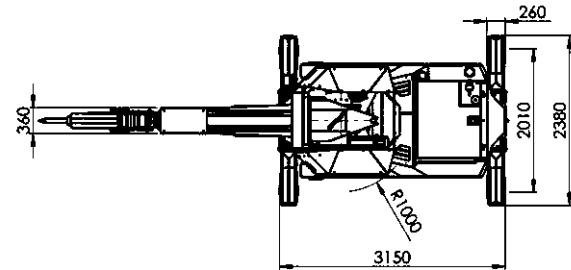
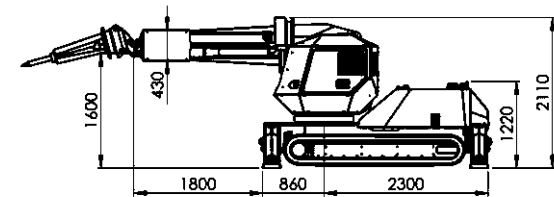
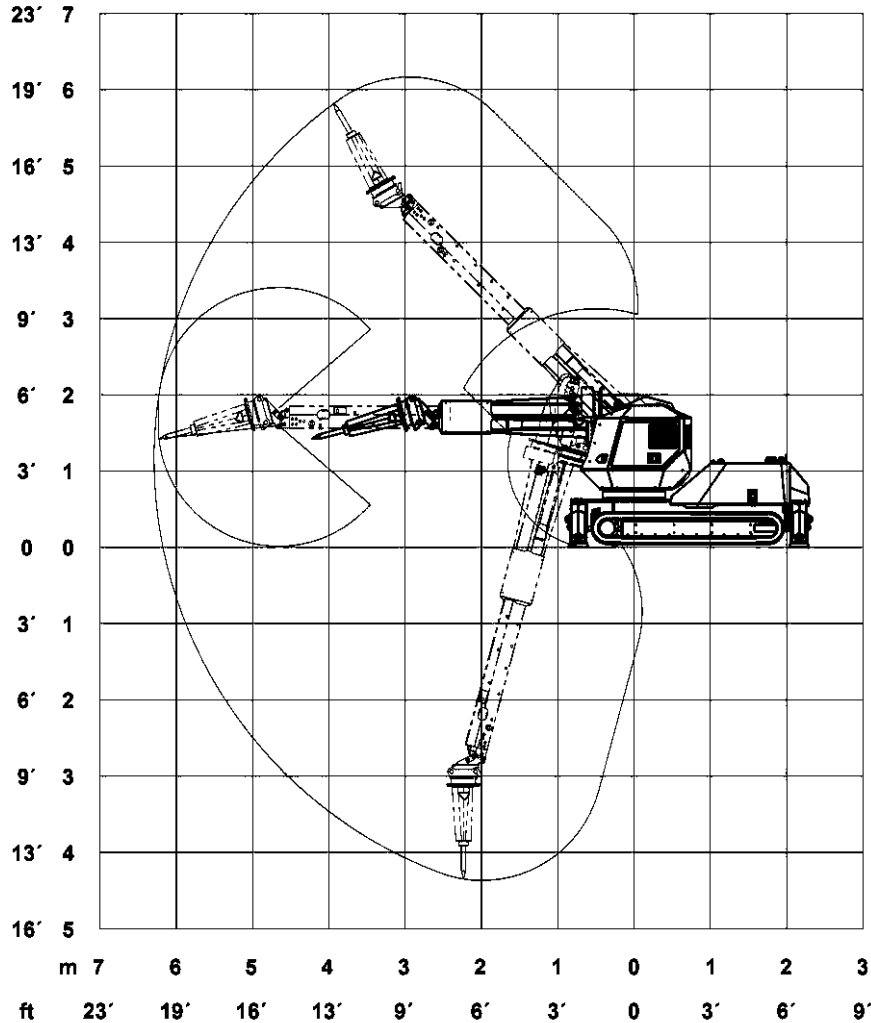
Lighting	2 Series Heavy Metal	2 Series Hard Rock
2x LED work lights upper structure, front	●	●
1x LED rotating beacon yellow	●	●
"Blue Spot" light in the rear area	●	●
Lighting package: 2x LED work lights	○	○

Attachment Tools	2 Series Heavy Metal	2 Series Hard Rock
Mechanical quick coupler	●	●
Rotary drum cutter	○	○
Profile drum cutter	○	○
Bucket 0,2 m³	○	○
Hydraulic grab	○	○
Hydraulic hammer max. 500kg	○	○
Concrete spray nozzles	○	○
Bow setting device	○	○

Key: ● Standard ○ Option

220

» Kinematics and dimensions



>> Kinematics and dimensions

220K

